

Symptom:  
Camera IP of HX-3,4,5,6 has been changed

**Symptom**

Camera IP of HX-3,4,5,6 has been changed and Camera cannot connect with PC.

Are firewalls or virus protections disabled?

Yes

Please deactivate firewall  
or virus protections

No

Do you have J-pad3?

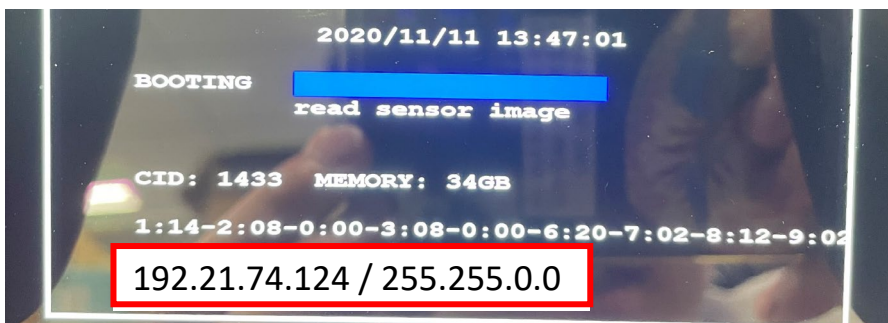
Yes

Please check and change  
Camera IP using J-pad3

J-PAD3 Set camera IP address

No

Please connect monitor (or View finder) and DVI cable to Monitor out connector of camera. And check Camera IP that appears on monitor when booting up.



Camera IP address

**Set IP address of PC as follows and reconnect with PC.**

Ex) 192.21.74.124 ( Camera IP)

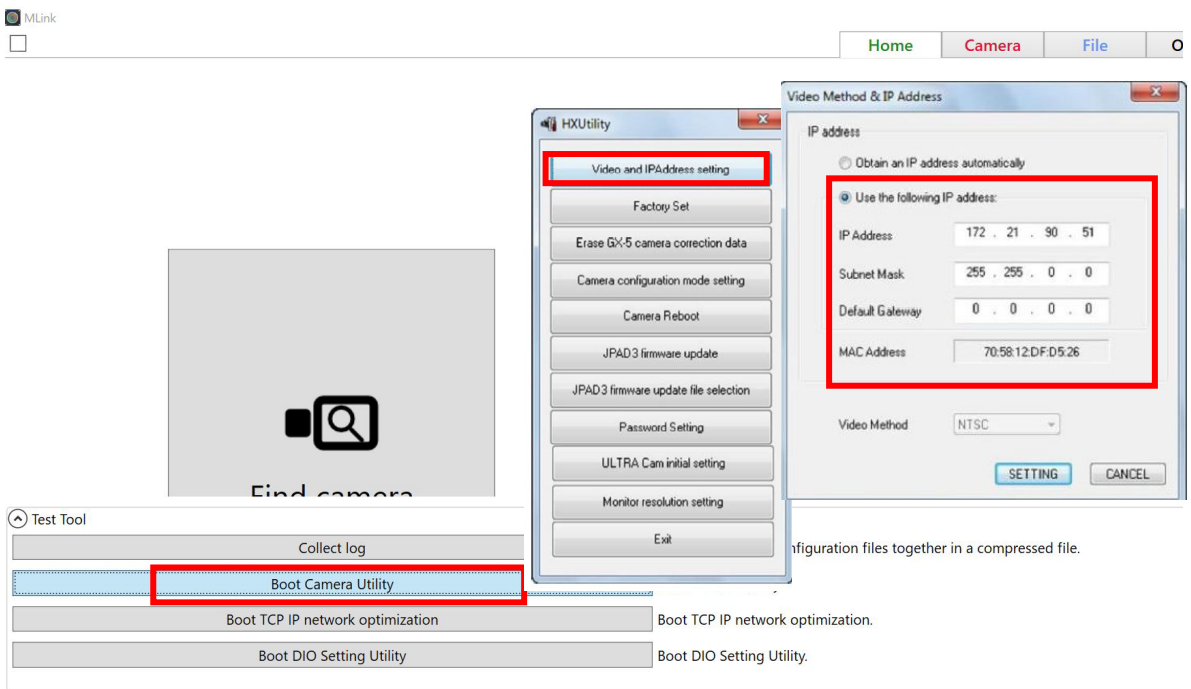
192. 21 xx. xx ( PC's IP )

XX.XX must be different from the IP address of Camera.

Next page

Please open HX Utility and change to appropriate camera IP.

- MLink



- HXLink

Please refer to following manual of HXUtility

**[HX utility set camera IP](#)**