

Symptom:

Camera IP of Qcam (Q1v,Q1m, Q2m) has been changed

Symptom

Camera IP of Qcam (Q1v,Q1m, Q2m) has been changed and Camera cannot connect with PC.

Are firewalls or virus protections disabled?

Yes

Please deactivate firewall or virus protections

No

Please connect Qcam and PC and open MLink or HXLink. Camera IP address will be displayed on Camera connection menu on software even if camera's IP and PC's IP are different.

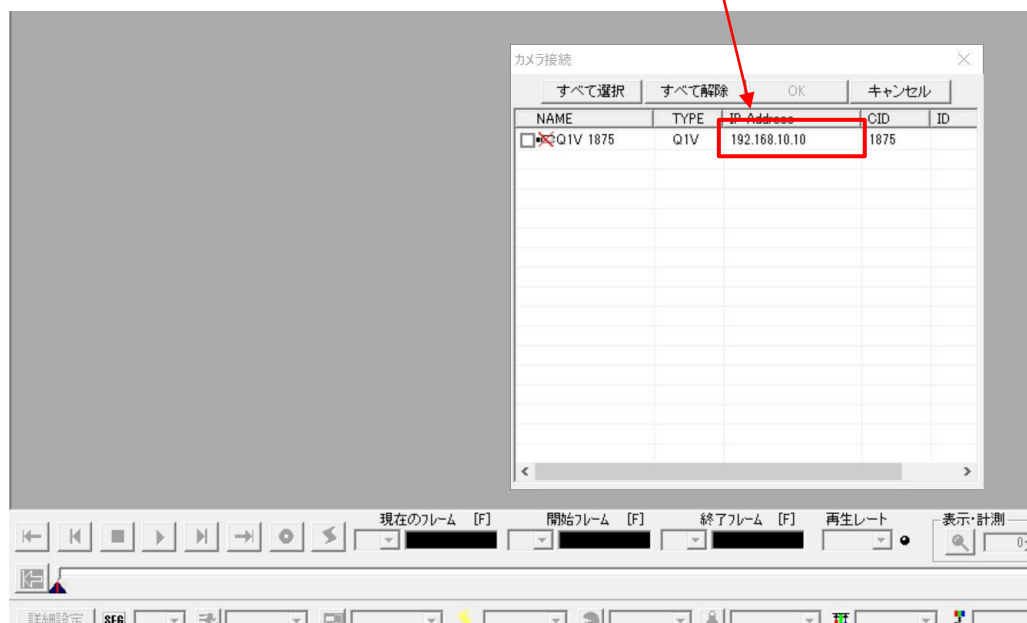
• MLink

Camera Connection

<input checked="" type="checkbox"/>	Camera Name	Type	CID	Head Type	Head ID	Head No.	IP Address
<input type="checkbox"/>	Q1v 1875	Q1v	1875				192.168.10.10

Camera IP address

• HXLink



Next page

Set IP address of PC as follows and reconnect with PC.

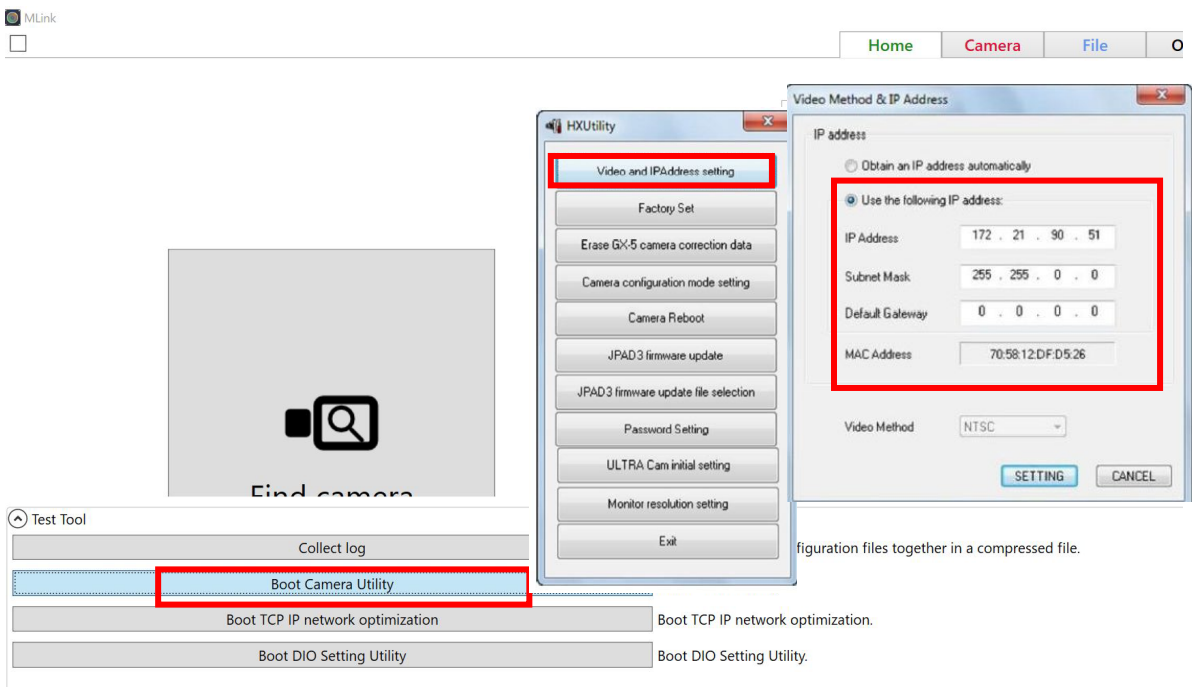
Ex) 192.168.10.10 (Camera IP)

192. 168. xx. xx (PC's IP)

XX.XX must be different from the IP address of Camera.

Please open HX Utility and change to appropriate camera IP.

- MLink



- HXLink

Please refer to following manual of HXUtility

HX utility set camera IP