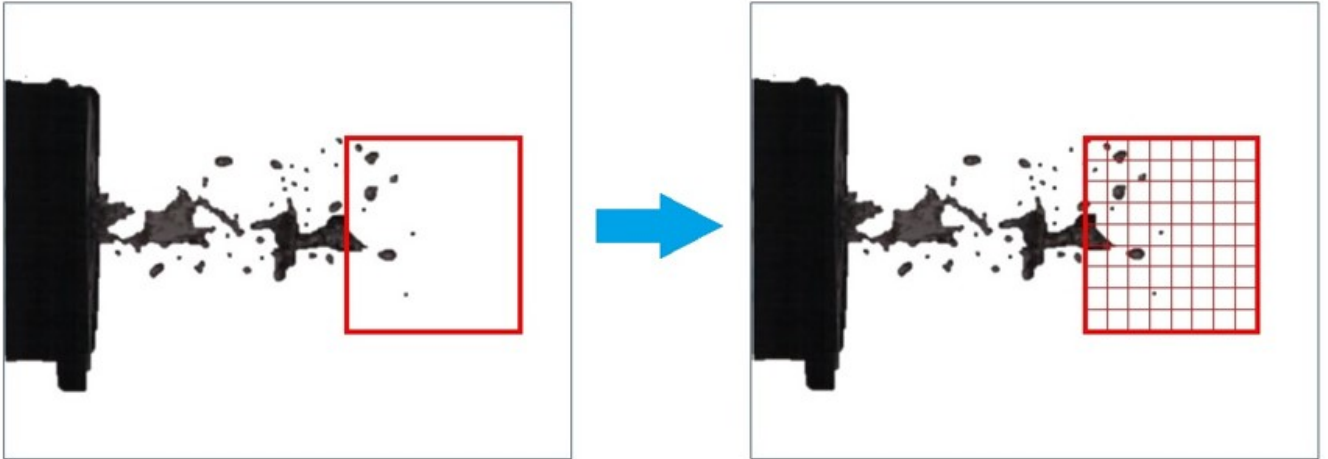


Image Trigger Function

Trigger detection by luminance change in the specified AOI area within the captured image area is possible.

In the ACS series, the AOI area can be segmented into smaller areas and the detection area can be set. (Luminance changes in minute areas can also be detected.)



Please refer to following pdf 'Manual of image trigger function'.

<https://www.nacinc.com/tech-support/pdf/Manual-of-Image-Trigger-Function.pdf>