

Various signal inputs and outputs are possible through the AUX connector.

Following several signals can be selected customizability

TRIG OUT / VD OUT / ARM OUT / FAULT OUT

<Features of TRIG OUT signal>

The TRIG OUT signals are trigger signals generated within the camera.

If you want to align the timing of external devices based on the trigger timing of the camera, TRIG OUT signal is useful.

After detecting any of the following, the trigger signals are generated at the selected output timing.

- MLink or V-PAD trigger key input
- External trigger (TRIG1 · TRIG2)
- mage trigger

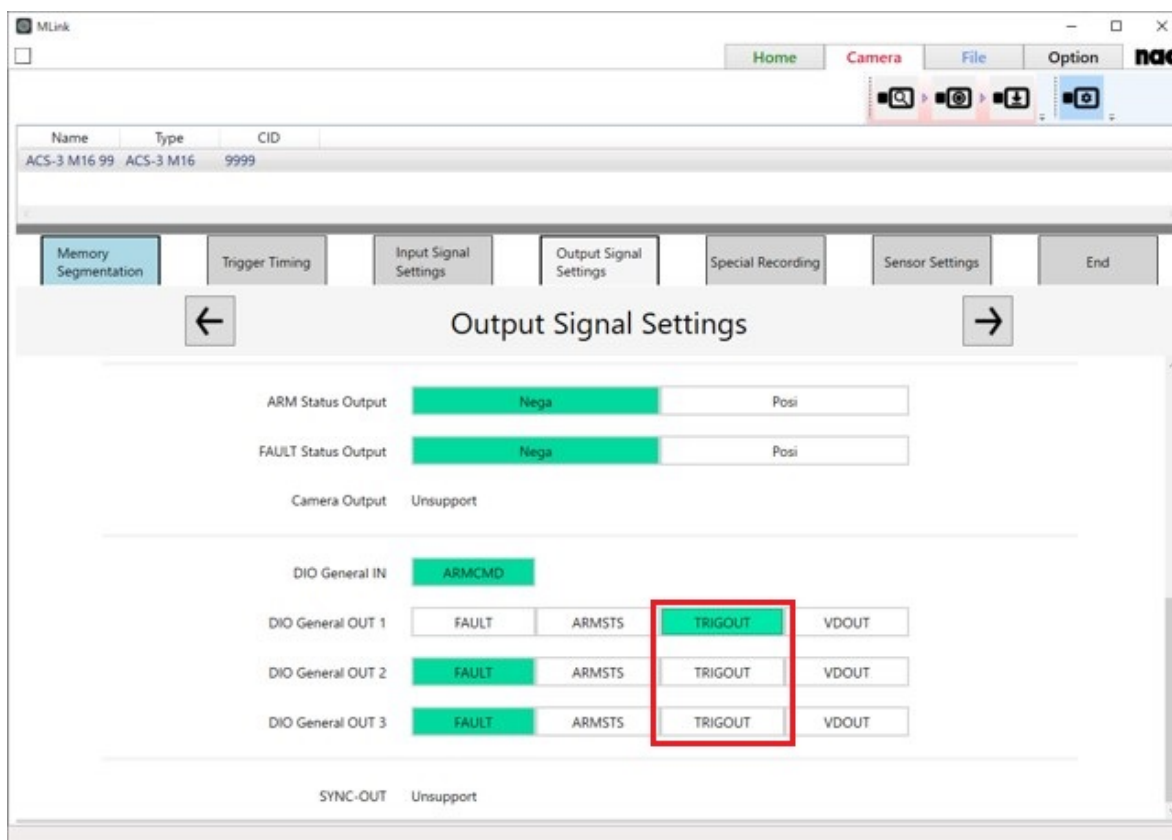
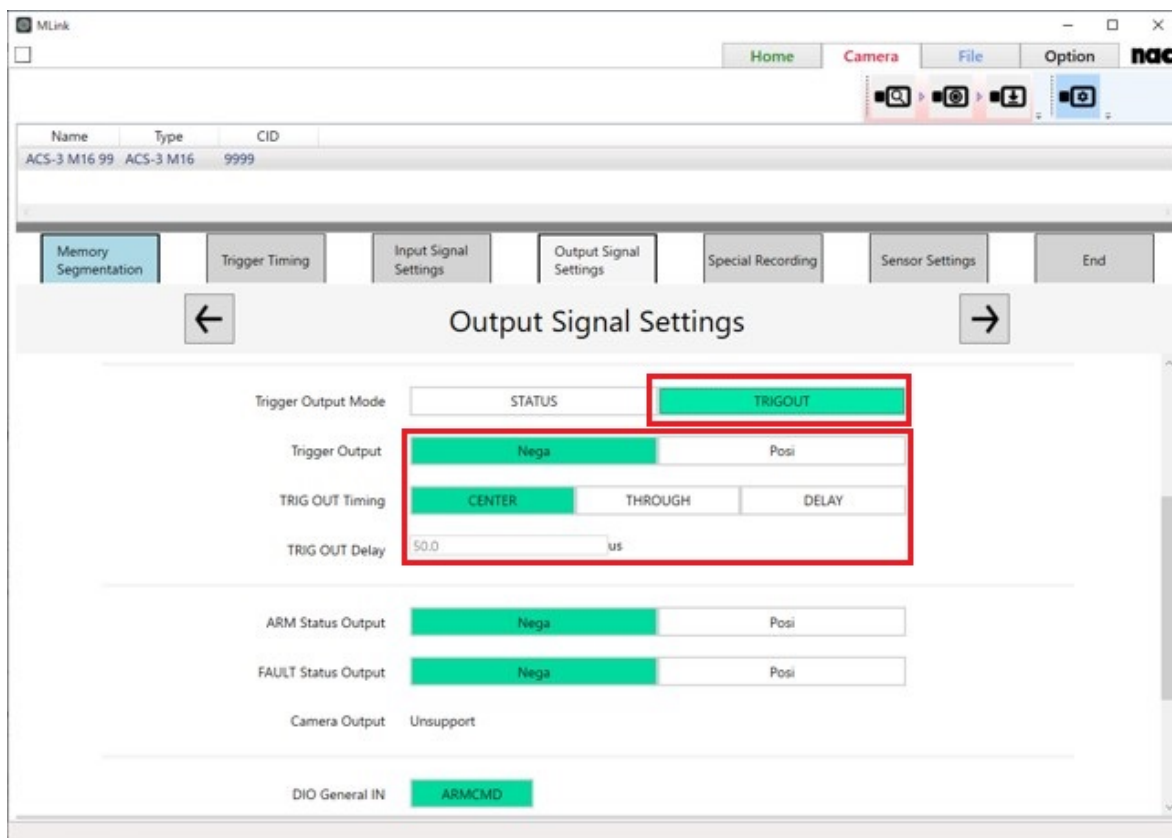
Select the trigger signal output timing from the following 3 items.

- Through: Output at the timing of the trigger input.
- CENTER: Center of frame
- Delay: Output delayed from the reference

*Triger Output Mode is required to select **TRIG OUT**.

GXnative: Exposure start reference, K4 compatible: Exposure end reference

TRIG OUT



Example: When the time delay is set to 5 μ s. (All of the signals are negative polarity)

